

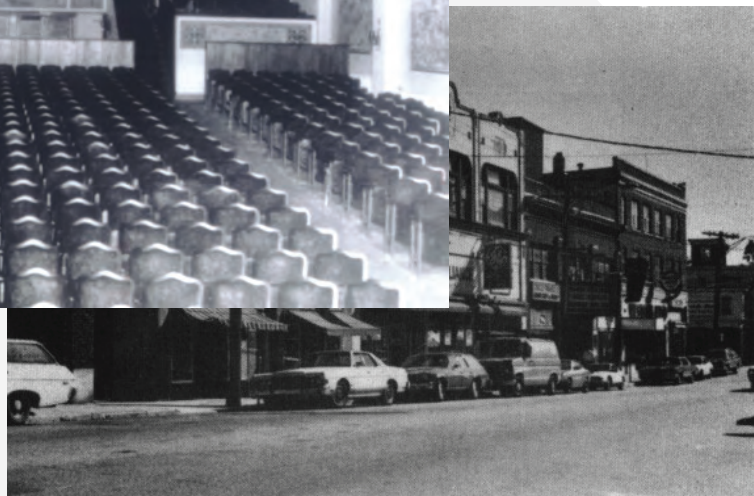
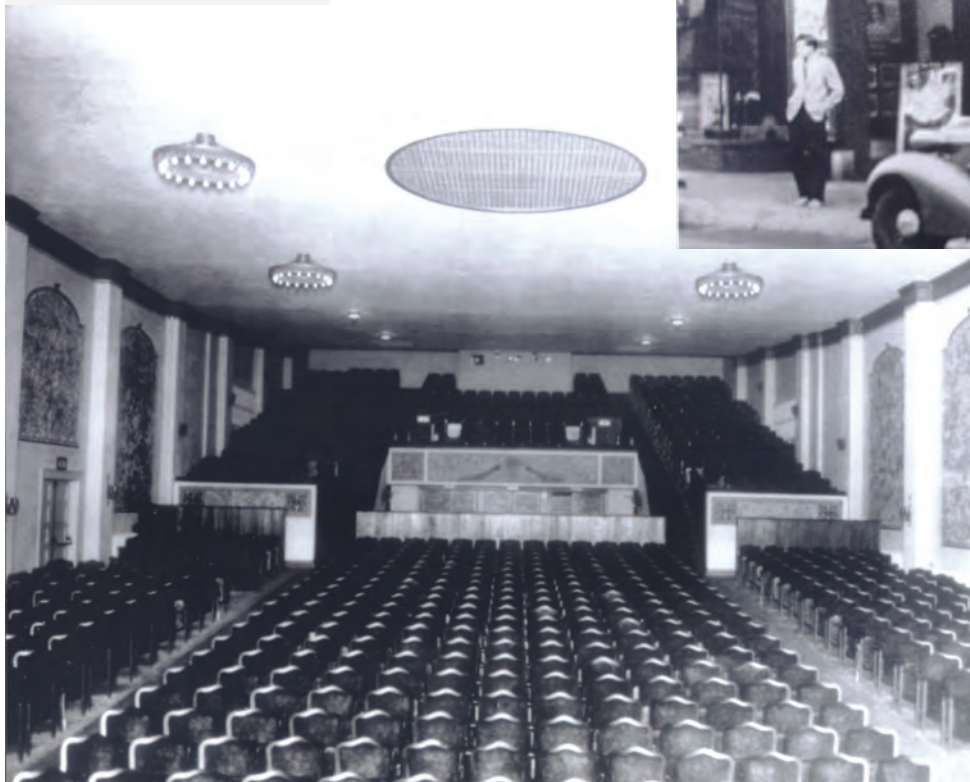


we aren't  
**UNITED**  
without

we aren't  
**UNITED**  
without



The UNITED is an unparalleled 38,000-square-foot nonprofit arts complex in Westerly, RI. Steeped in a rich history, it began as a vaudeville house in the 1920s before becoming a cinema and remained a hub of the community until it became dormant in the late 1980s.





In 2015, Chuck Royce and a group of visionaries identified the need for a center for arts and arts education as a critical piece to the revitalization of Westerly and took over both the historic building and a neighboring department store. After several years of dedicated work supported by the vision, generosity and perseverance of the community and its leaders, the UNITED opened its doors in 2021.





At the heart of The UNITED is a magnificent 600-capacity black box auditorium, providing an intimate yet captivating setting for various live performances. In addition, the complex boasts three distinct film venues, an art gallery and events space, a radio studio, and a music school, the RI Phil Music School @ The UNITED, welcoming almost 350 students of all ages and abilities every week.



Serving as a physical hub of artistic activity, The UNITED plays a pivotal role in nurturing and inspiring the vibrant creative community of southern Rhode Island and southeastern Connecticut.

# UNITED by the numbers

---




shows & events



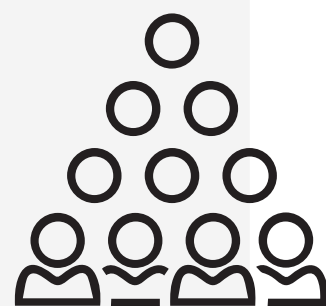
350  
music  
school  
students



40+  
Volunteers



50,000+  
patrons from  
over 30 states  
and 3 countries



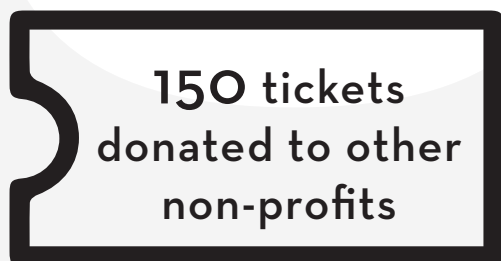
300+ members



15+ community  
organization  
partnerships



Preserve RI - '22  
Rhody Award for  
Historic  
Preservation



150 tickets  
donated to other  
non-profits

# JULY

🎬 film
🎤 comedy
🎵 music
🎙️ speaker event
👨‍👩‍👧 family fun
🎭 literary talk
🎬 (post-credit scene)
🎬 special film screening

sunday	monday	tuesday	wednesday	thursday	friday	saturday
<p>Offering a range of music education programs and performance opportunities to people of all ages, incomes and ability levels.</p>	<p>morning yoga</p>	<p>ASTEROID CITY</p> <p>playing through 7/10</p>	<p>GAME NITE</p> <p>June 28</p>	<p>premiere</p> <p>INDIANA JONES &amp; the DIAL OF DESTINY</p>	<p>premiere</p> <p>MASTER GARDENER</p>	<p>EIGHT MOUNTAINS</p> <p>playing through 7/6</p>
<p>BIOSPHERE</p>	<p>ZIGGY STARDUST</p> <p>and the SPIDERS FROM MARS</p>	<p>premiere</p> <p>MISSION IMPOSSIBLE: Dead Reckoning</p>	<p>Voices of WESTERLY</p> <p>a UNITED podcast</p>	<p>the U</p>	<p>ITPP</p> <p>TOM PETTY PROJECT</p>	<p>Improvisation Night</p> <p>&amp; Beginner's Workshop</p>
<p>POPPY'S PLANET</p>		<p>HELL COMES TO FROGTOWN</p>	<p>LIVE MUSIC</p> <p>with special guests</p>	<p>BRUCE HARRIS SEXTET</p> <p>with Grammy Washington</p>	<p>premiere</p> <p>Barbie &amp; MALIBU MIXER</p>	<p>book talk and signing w/ author CINDY EAGAN</p>
<p>BLUE TEAN</p> <p>through 8/3</p>	<p>Close to Vermeer</p> <p>through 8/3</p>	<p>The Searchers</p> <p>REWIND</p>	<p>LITERACY VOLUNTEERS of Washington County</p> <p>w/ LAYNG MARTINE</p>	<p>FEMININE WILES</p> <p>on display</p> <p>JULY 28 - SEPT. 17</p>		
<p>ON THE MIC</p>						

# AUGUST

sunday	monday	tuesday	wednesday	thursday	friday	saturday
		<p>JIM MESSINA</p>	<p>SIP AND PAINT</p>	<p>MUSIC TOGETHER</p> <p>sessions throughout the summer</p>	<p>in conversation with LIZA DONNELLY</p>	<p>premiere</p> <p>TEENAGE MUTANT NINJA TURTLES</p> <p>Mutant Mayhem</p>
<p>premiere</p> <p>PAST LIVES</p>	<p>DEVON ALLMAN &amp; DONOVAN FRANKENREITER</p>	<p>ATTACK THE BLOCK</p>	<p>FRINGE PVD</p> <p>PROVIDENCE THEATRE GROUP</p>	<p>ENCORE series</p>	<p>EUGENE O'NEILL THEATER CENTER Junior Fellows Cabaret</p>	
<p>POPPY'S PLANET</p>		<p>VERTIGO</p> <p>REWIND</p>	<p>Voices of WESTERLY</p> <p>a UNITED podcast</p>	<p>the UNITED Podcast Network</p>	<p>Mphalove</p> <p>SUNDUB</p>	<p>GEORGE MOORE cabaret</p>
	<p>MIRACLE CLUB</p> <p>through 8/31</p>	<p>film night</p>	<p>LIVE MUSIC</p> <p>with special guests</p>	<p>the Load-In</p> <p>Box Office Culture</p> <p>Voices of WESTERLY</p>	<p>parlando</p>	
<p>What the Constitution Means to Me</p> <p>presented by League of Women Voters of South County</p>	<p>DONATE</p>	<p>32 SOUNDS</p> <p>SCENE &amp; heard</p>	<p>GAME NITE</p> <p>30</p>			

The UNITED is a non-profit organization. Show your support for the arts and for your community! Generous contributions allow the United to bring a diversity of dynamic programming to the region - benefiting both locals and visitors alike. Donations are tax deductible by law. Our EIN 463579526



Having completed our 15 million dollar plus facility without incurring any debt, we now turn our focus to securing annual support. Our organization operates with only six full-time staff members and an annual budget surpassing one million dollars. Annual support is critical in expanding our programming, increasing learning opportunities, and catering to a broader audience. Our goal is to educate, entertain, and inspire the community.

To provide you with a glimpse of our dynamic offerings, we invite you to scan the QR code provided to access a sizzle reel showcasing the vibrant experiences and events held at the UNITED.

We sincerely appreciate your consideration and support.

the  
**UNITED**

5 Canal Street  
Westerly, RI 02891  
(401) 388.8208  
info@unitedtheatre.org

scan for reel

